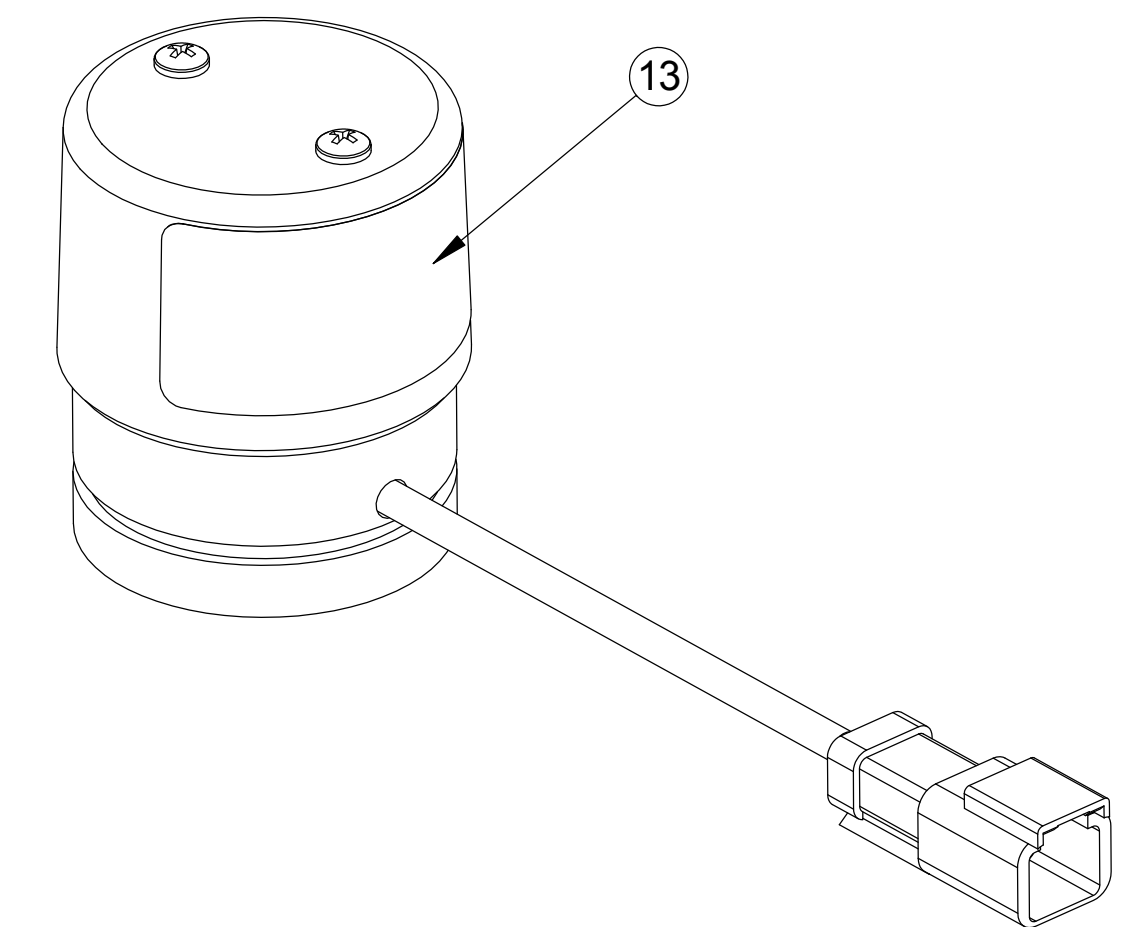
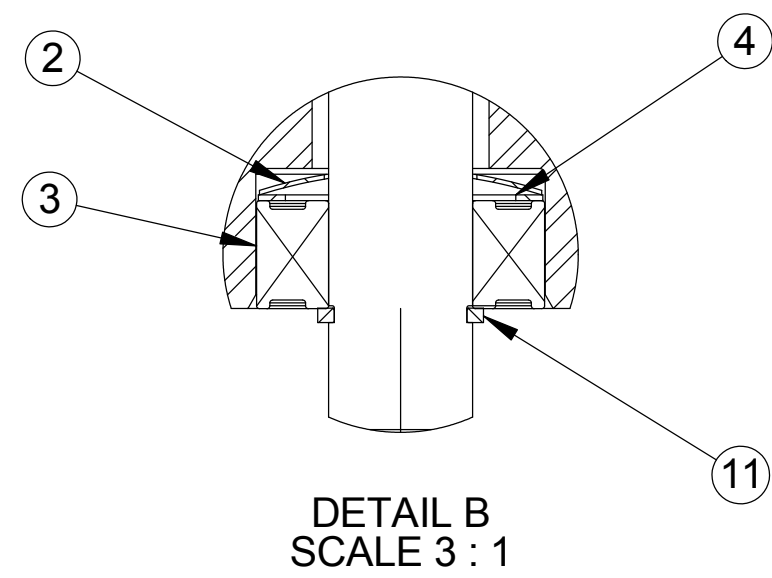
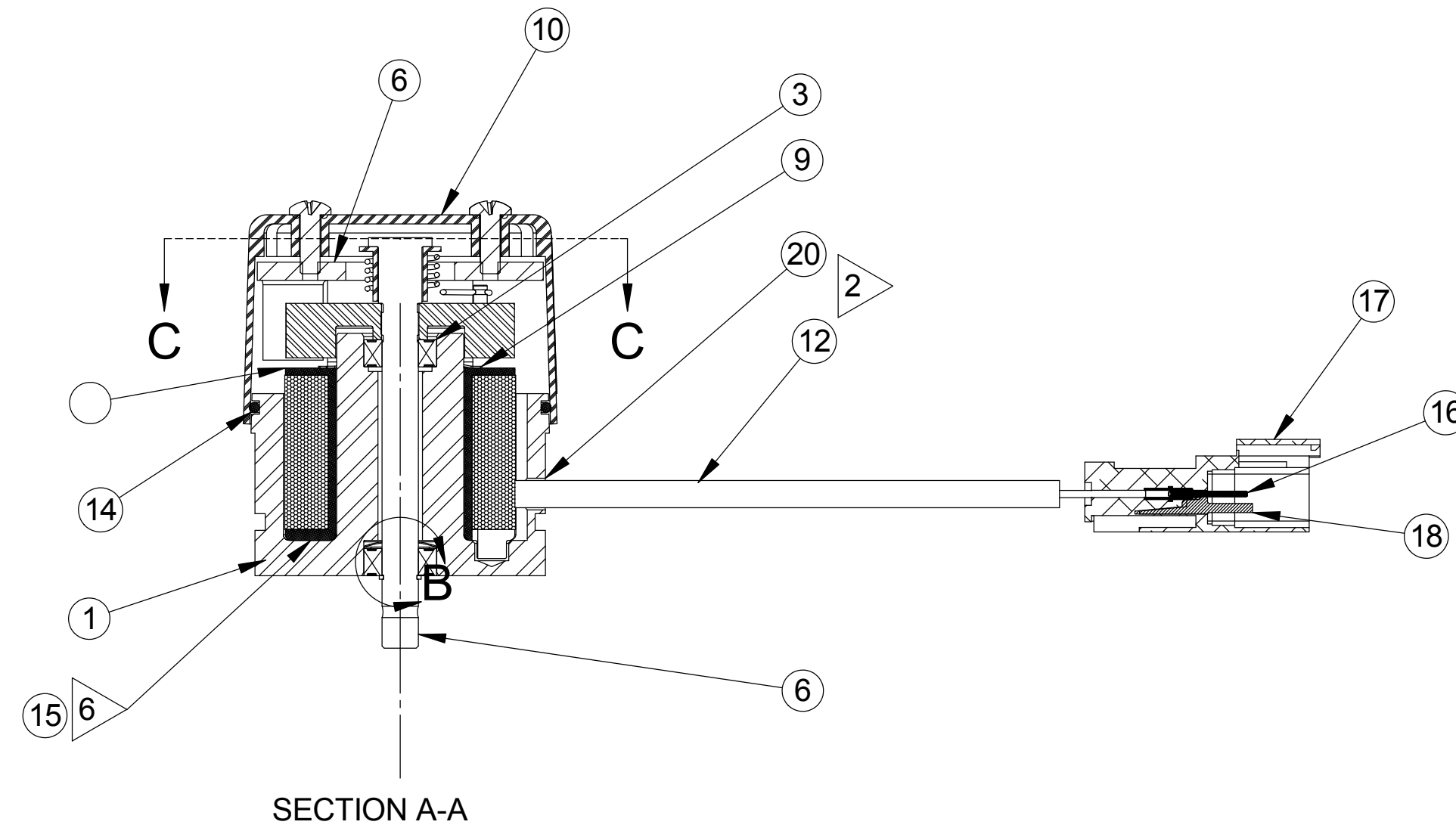
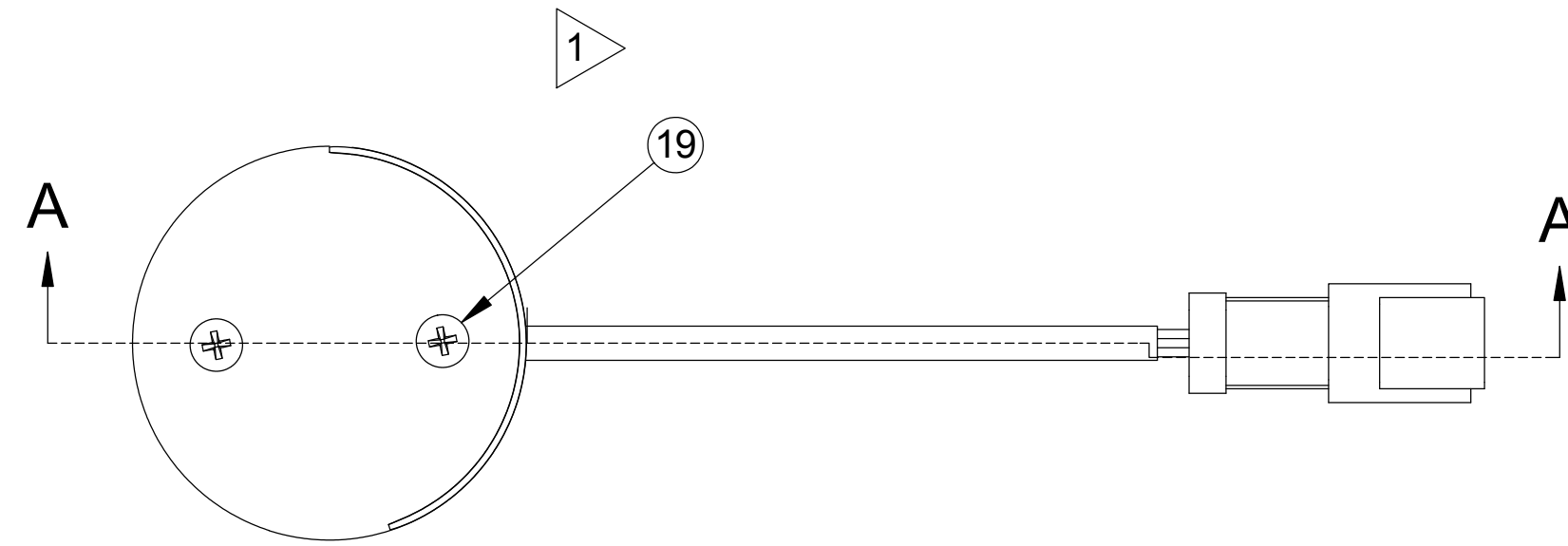
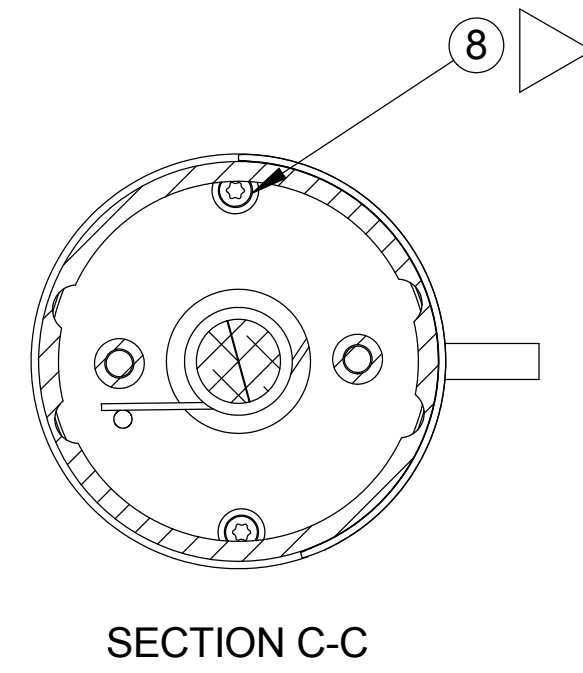
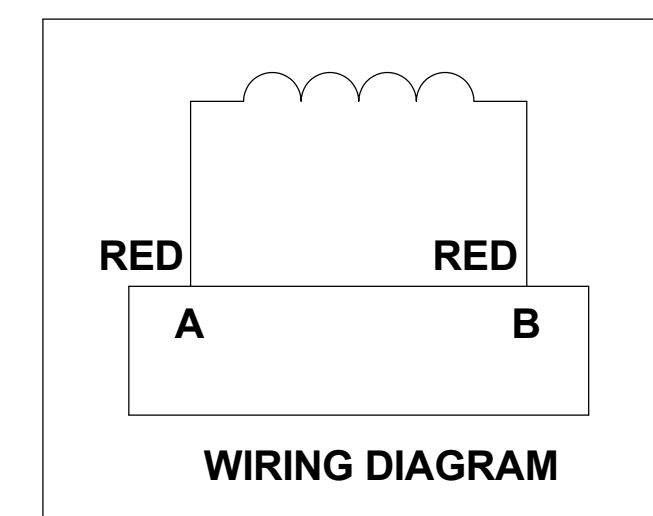


REVISIONS				
CO	LTR	DESCRIPTION	DATE	APPROVED
1100973	NEW	RELEASE TO PRODUCTION	06-13-07	JLS
1105275	A	FIX TYPO IN NAMEPLATE DATA	10-24-07	JOSCHN



CUSTOMER: CLEAN AIR PARTNERS (CAP)
 CAP PART NO.: 904304-1
 CUSTOMER DWG NO.: 5555-1278
 ASSEMBLY AND TEST INSTRUCTIONS:

- 1 TORQUE SCREW TO 12.0-14.0 IN.LBS.
- 2 FILL CAVITY AROUND LEAD WIRES WITH ITEM #20, SILICONE RUBBER ADHESIVE, FLUSH TO OUTER SURFACE OF ITEM #1, COIL HOUSING.
- 3 FUNCTIONAL TEST PER SYN 140-18.
- 4 DIELECTRIC TEST: EITHER COIL LEAD TO BARE METAL AREA ON HOUSING OR STOP PLATE = 500 VAC
- (A) 5 NAMEPLATE DATA:
 PART NO.: 8270-5000
 VOLTAGE: 12
 SERIAL NO.: PER TC 623.
- 6 BOND ITEM 7, COIL ASSEMBLY, TO ITEM 1, COIL HOUSING, USING ITEM 15, EPOXY. LOCATE AS SHOWN.
- TORQUE SCREW TO 6.0-7.0 INLB



CONNECTOR PER DEUTSCH
 PART NO. DTM04-2P-E003
 PART NO. PIN 0460-202-20141
 PART NO. WEDGE WM-2P

ITEM	PART NO.	DESCRIPTION	QTY.
1	DC1107-120-0-00	COIL HOUSING	1
2	DC3118-000-0-00	CURVED SPRING WASHER	1
3	P1-162	BALL BEARING	2
4	DC3051-005-0-00	SPACER	1
5	DC1116-320-0-00	CW ROTOR / SHAFT ASSY	1
6	710-1076	CW STOP PLATE ASSY	1
	DC602-061-0-00	12 VOLT COIL ASSEMBLY	1
8	DC3052-004-0-00	#4-40 X 3/8 TAP TITE SCREW	2
9	DC3090-002-0-00	RETAINING RING	1
10	DC1125-050-0-00	ACTUATOR COVER	1
11	AYRF-22	EXT. RETAINING RING	1
12	EP383-012-0-00	SHRINK SLEEVING	1
13	DC761-270-0-00	NAMEPLATE	1
14	DYNC-1224	O-RING	1
15	DYRZ-63	ECO-BOND 286	A/R
16	DYNK-270-002	CONTACT	2
17	DK-243-007-000	CONNECTOR	1
18	DYNK-273-001	WEDGE	1
19	1031-1431	#6-32 X 7/16 PHILLIPS SCREW	2
20	H6-85	ADHESIVE, SILICONE RUBBER	A/R

THIS DRAWING IS DISCLOSED IN CONFIDENCE AND IS AND SHALL REMAIN THE PROPERTY OF WOODWARD CONTROLS, INC. IT SHALL NOT BE COPIED OR DUPLICATED IN ANY MANNER AND SHALL NOT BE SHOWN TO ANYONE ELSE WITHOUT WRITTEN CONSENT. IT SHALL BE USED ONLY WITH REFERENCE TO WORK UNDER CONTRACT WITH OR PROPOSALS SUBMITTED BY WOODWARD CONTROLS, INC.

MATERIAL	AS NOTED	TITLE	ACTUATOR, ROTARY CW
TREATMENT & FINISH		QCC LLC 7301 W. Wilson Avenue Harwood Heights, IL 60706	
TOLERANCES UNLESS OTHERWISE SPECIFIED		DRAWN BY: TODWIL	APP BY:
DIM.	3 PLACES ±.127	SCALE 1:1	DATE 03-02-07
MM	2 PLACES ±.25	DRAWING NO. 8270-5000	
INCH	±.005		
ANGULAR DIM.	±1/2°		