

Hydraulic power brake valve

Model MB08-HMS

RA 66138

Edition: 08.2014

Replaces: 05.1994



- ▶ Component series 20
- ▶ Service brake pressure 35, 40, 60, 70, 80, 100, 120, and 150 bar braking

Features

- ▶ Compact design
- ▶ Integrated maximum pressure limitation of the brake circuits
- ▶ Brake pressure proportional to actuation force
- ▶ Low hysteresis
- ▶ Brake line pressure synchronization
- ▶ Line mounted
- ▶ Rugged construction
- ▶ Optional treadle-style foot pedal

Contents

Ordering code	2
Technical data	3
Function	4
General notes	5
Intended use	5
Characteristic curves	6
Dimensions	7

Ordering code

01	02	03	04	05	06	07	08	09			
MB	08	-	HM	S	-	20	/	19	M	/	

01 to 04	This information is used only for internal purposes and is always identical.	MB08-HMS
----------	--	-----------------

Component series

05	20	20
----	----	-----------

Service brake pressures

06	35 bar	506/667 PSI	35/46 bar	Linear	35
	40 bar	580/769 PSI	40/53 bar	Linear	40
	60 bar	870/1131 PSI	60/78 bar	Linear	60
	70 bar	1015/1305 PSI	70/90 bar	Linear	70
	80 bar	1160/1463 PSI	80/101 bar	Linear	80
	100 bar	1450/1840 PSI	100/127 bar	Linear	100
	120 bar	1740/2200 PSI	120/152 bar	Linear	120
	150 bar	2164/2715 PSI	149/187 bar	Linear	150

Line connections

07	SAE straight thread O-ring ports			19
	Supply pressure port	P	SAE-06	
	Tank port	T	SAE-06	
	Brake service ports	B, BLS	SAE-06	
	Auxiliary pressure port	ACS, PLT	SAE-04	

Seal material

08	NBR seals, suitable for mineral oil (HL, HLP) according to DIN 51524	M
----	--	----------

Options

09	<i>Option codes – further details in clear text</i>	
	With optional treadle-style foot pedal (R978728913) – mounted	FP
	Dual-slope metering characteristics (with nested stage inner spring)	DSM

Service seal kit

Material description	Ordering No.
Kit-Seal, Brake Valve	R978726673

Note: Seal kit contains shaft seal, dust cover, and O-ring.

Technical data

General				
Weight	Without pedal		lb (kg)	2.4 (1.1)
	With standard pedal		lb (kg)	3.7 (1.7)
Installation positions	Variable mount possible			
Type of connection	SAE straight thread ports per J1926-1 or ISO 11926-1			
Ambient temperature range		θ	°F (°C)	-13 to +176 (-25 to +80)
Hydraulic				
Maximum service brake pressure at port	B, BLS, PLT	p	PSI (bar)	3000 (207)
Maximum inlet pressure at port	P, ACS	p	PSI (bar)	4000 (276)
Maximum tank pressure at port	T	p	PSI (bar)	10 (0.7) Maximum continuous back pressure. No oscillation permitted.
Hydraulic fluid	Mineral oil (HL, HLP) according to DIN 51524, other hydraulic fluids, such as HEES (synthetic esters) according to VDMA 24568 as well as hydraulic fluids as specified in the data sheet 90221, on inquiry.			
Hydraulic fluid temperature range		θ	°F (°C)	-4 to +80 (-20 to +26.7)
Viscosity range		ν	SSU (mm ² /s)	40 to 1800 (2.8 to 380)
Maximum permitted degree of contamination of the hydraulic fluid, cleanliness class according to ISO 4406 (c)	Class 17/14 or better			

Note:

For applications outside these parameters, please consult us!

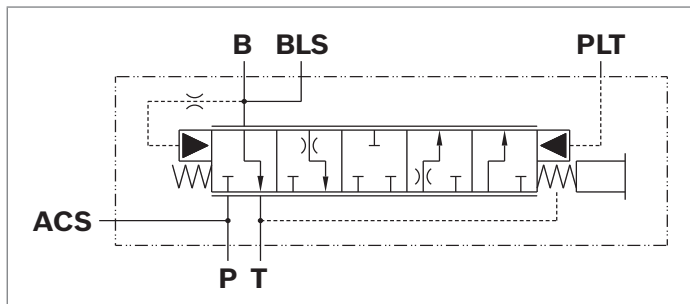
Function

The single circuit hydraulic power brake valve is a directly operated 3-way pressure reducing valve with smooth mechanical operation. The valve regulates pressure in brake line circuit proportional to force applied to actuator.

Single circuit power brake valve components include: housing (1) regulating spool (2), regulating spring (3), actuator (4), and the return spring (5).

The operator depresses the actuator (4). The regulating spring (3) strokes the regulating spool (2), closing off the T port and opening the brake circuit port B to accumulator pressure through supply pressure port P. Pressure from brake circuit port B is communicated to return spring chamber (5), where feedback force is developed, opposing the operator's input force. When the sum of feedback force and return spring (5) pre-load is equal to the operator input force transmitted through regulating spring (3), the regulating spool moves to a blocked center condition where the P, T, and B ports are closed simultaneously. When operator (4) input force is removed, the regulating elements move to the standby position, blocking the pressure port P and venting the service port B to tank.

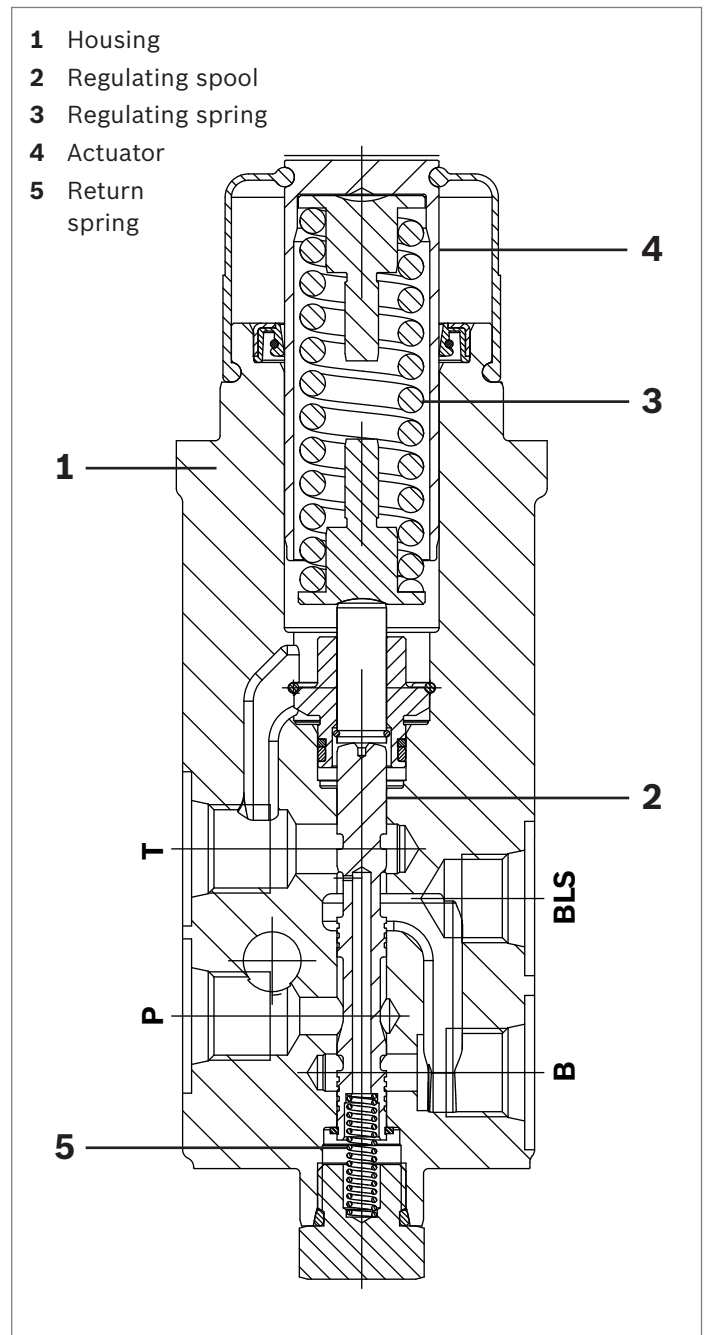
▼ Symbol



Ports	
ACS	Accumulator charge switch port
P	Supply pressure port
T	Tank port
BLS	Brake light switch port
B	Brake system work port
PLT	Hydraulic pilot port

If pressure falls in brake system line B or operator pushes harder on actuator (4), the supply pressure P is re-connected to brake system port B until force is balanced again. If brake system port B is too high, fluid is bled to tank through the T port until balance is again established. When force to actuator is removed, the regulating spool (2) moves to standby position, blocking the supply pressure port P and venting the brake system work port B to tank T.

▼ Cross-section



General notes

Installation notes

- ▶ Rubber parts must not be painted.
- ▶ Operating elements must not be directly exposed to high-pressure jet cleaning.
- ▶ The tank must be mounted above the brake valve MB08-HMS to avoid drainage of the brake valve.
- ▶ When assembling below the base plate it must be taken care that the movement of the pedal cannot be affected by dirt.

Intended use

The MB08-HMS is exclusively intended to be assembled together with other components to form partly completed or complete machinery. The component may only be commissioned if it has been integrated in the machine for which it is designed.

Notes for the repair

- ▶ Damaged valves must be repaired, even if their function is not impaired.

Installation position

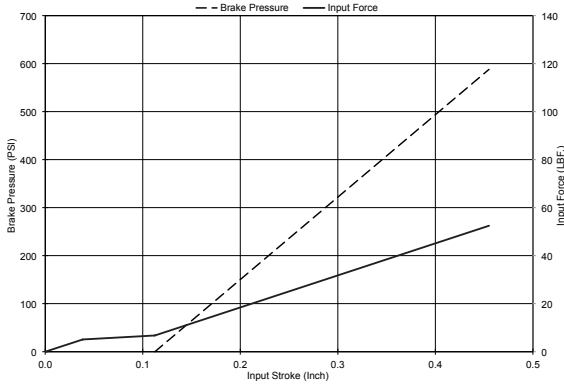
- ▶ Variable mount possible.

You may use the product as follows:

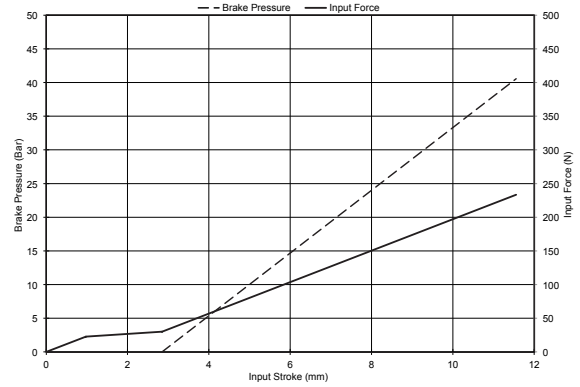
- ▶ The brake valves MB08-HMS have been developed for the application in mobile working machinery.
- ▶ Comply with the technical data.
- ▶ The product is only intended for professional use and not for private use.

Characteristic curves

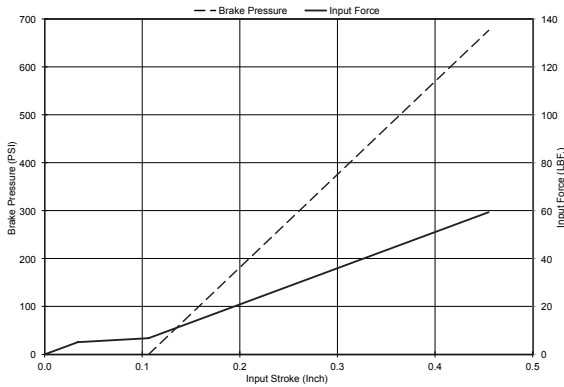
▼ Nominal metering performance, 35, English



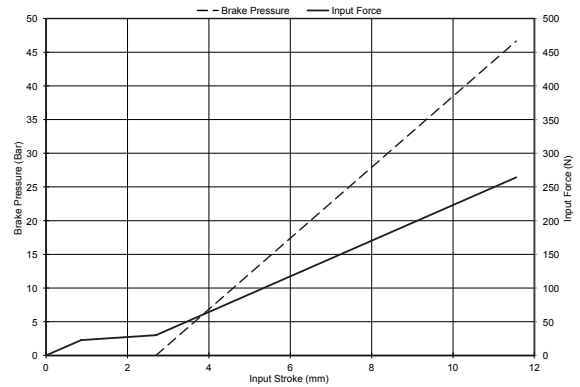
▼ Nominal metering performance, 35, Metric



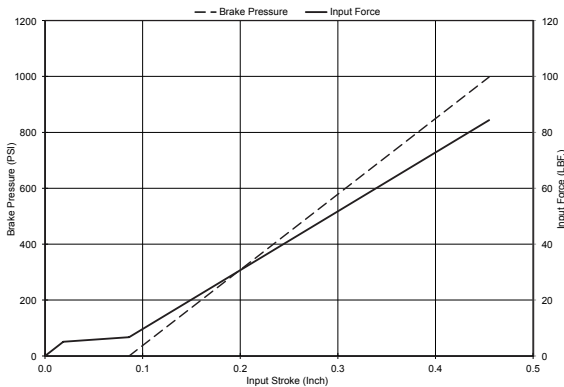
▼ Nominal metering performance, 40, English



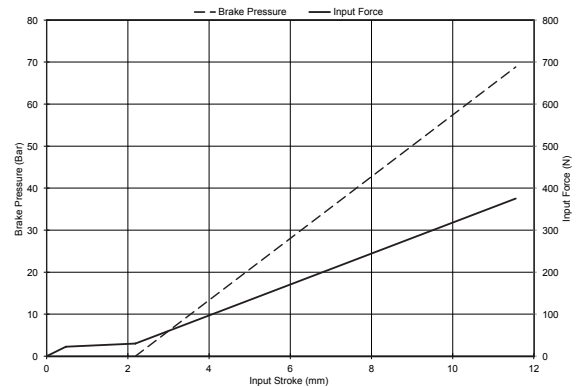
▼ Nominal metering performance, 40, Metric



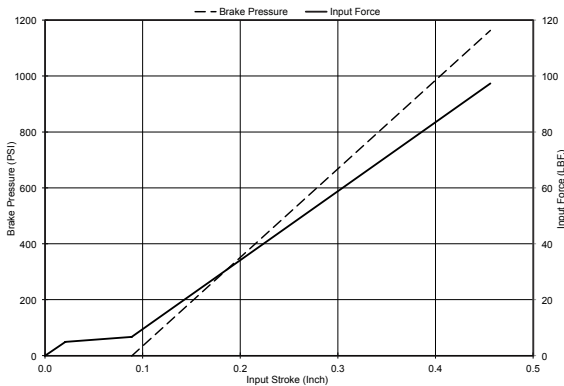
▼ Nominal metering performance, 60, English



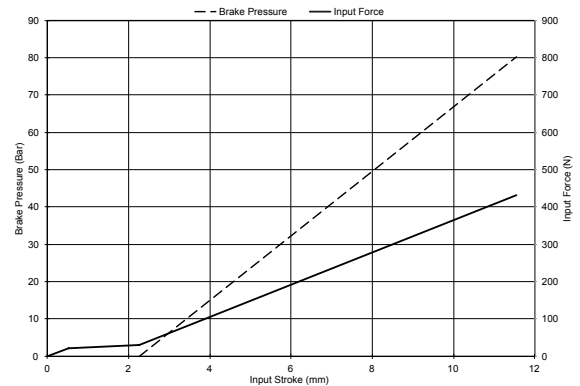
▼ Nominal metering performance, 60, Metric



▼ Nominal metering performance, 70, English

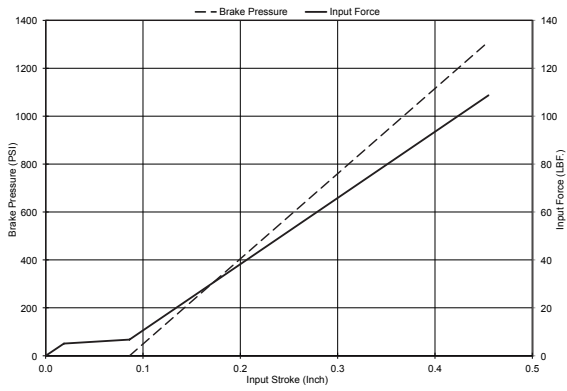


▼ Nominal metering performance, 70, Metric

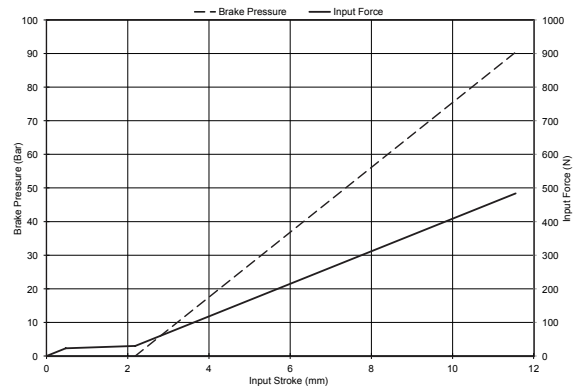


Characteristic curves

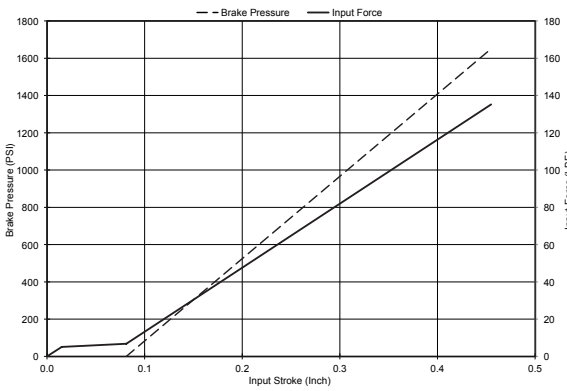
▼ Nominal metering performance, 80, English



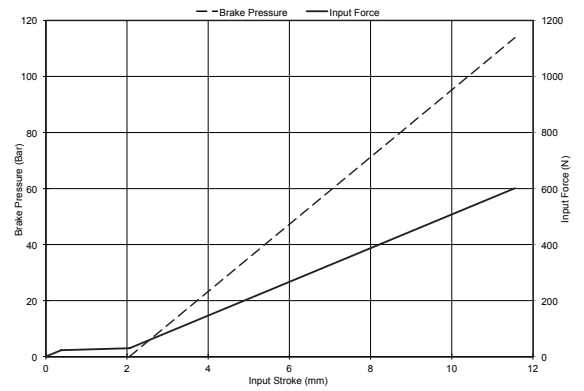
▼ Nominal metering performance, 80, Metric



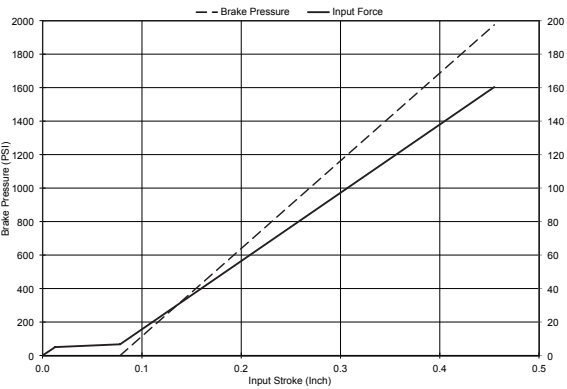
▼ Nominal metering performance, 100, English



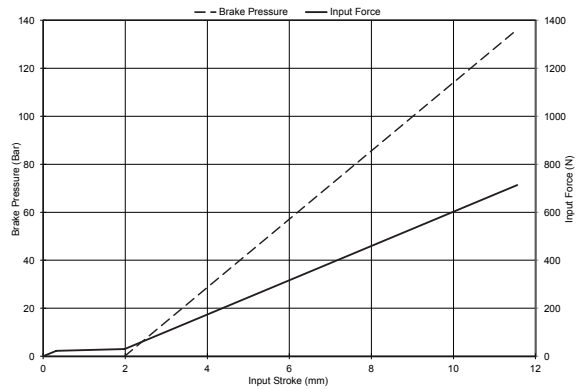
▼ Nominal metering performance, 100, Metric



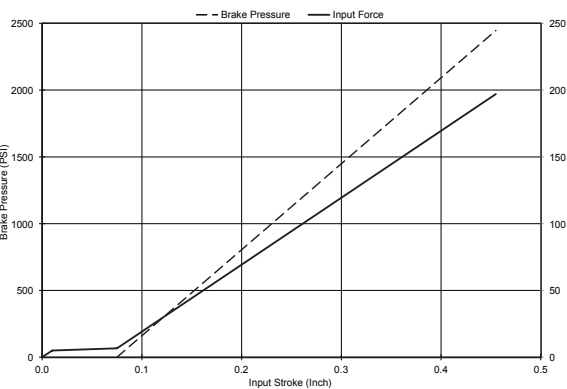
▼ Nominal metering performance, 120, English



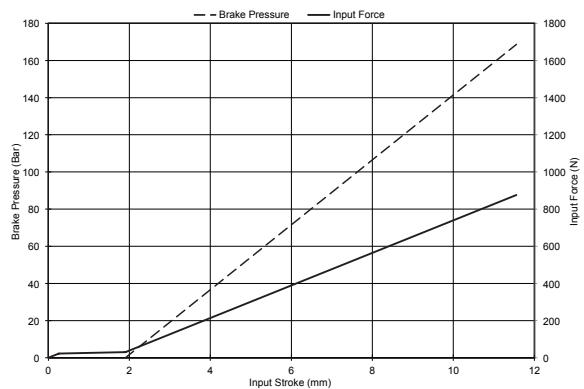
▼ Nominal metering performance, 120, Metric



▼ Nominal metering performance, 150, English

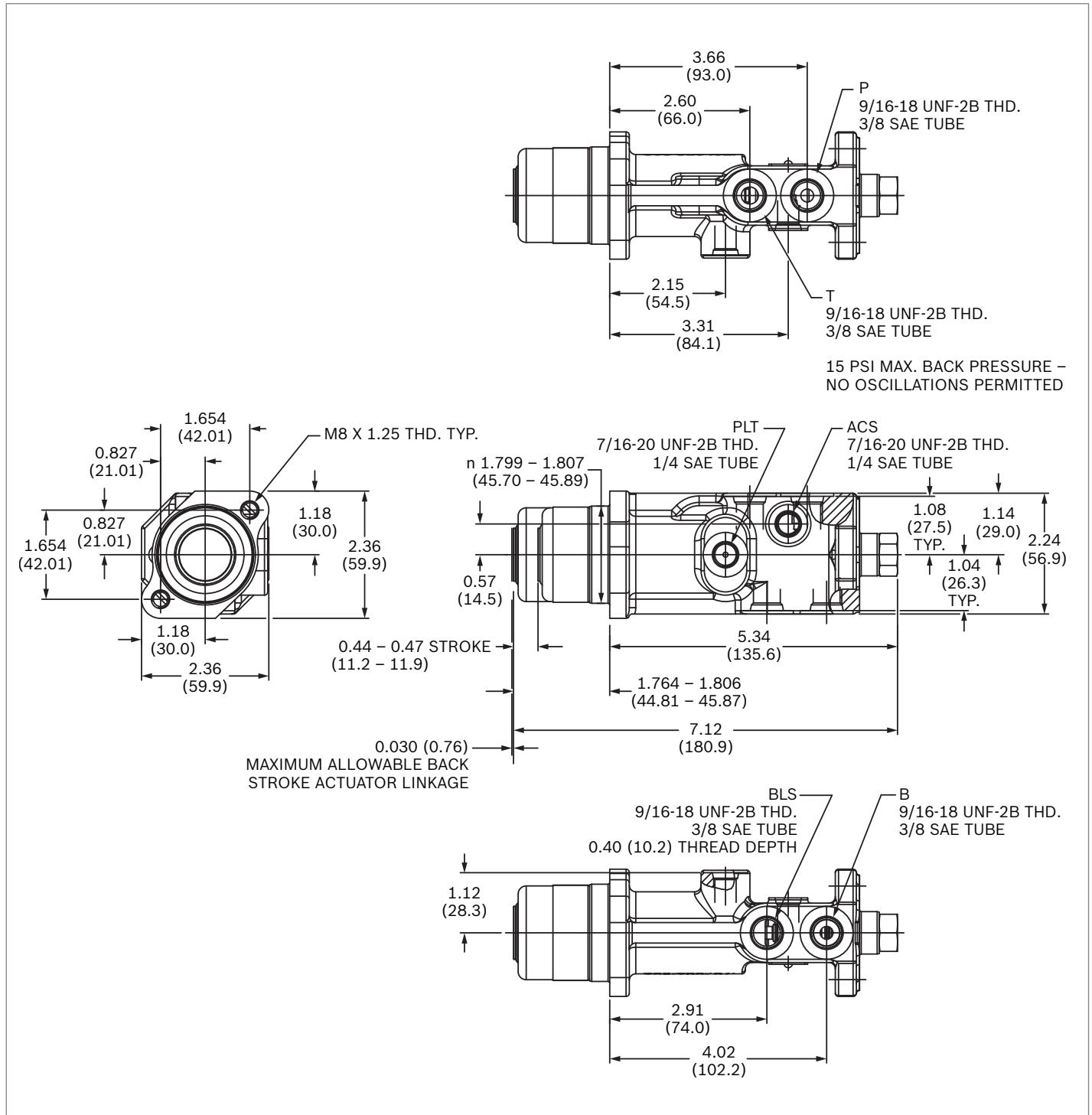


▼ Nominal metering performance, 150, Metric



Dimensions

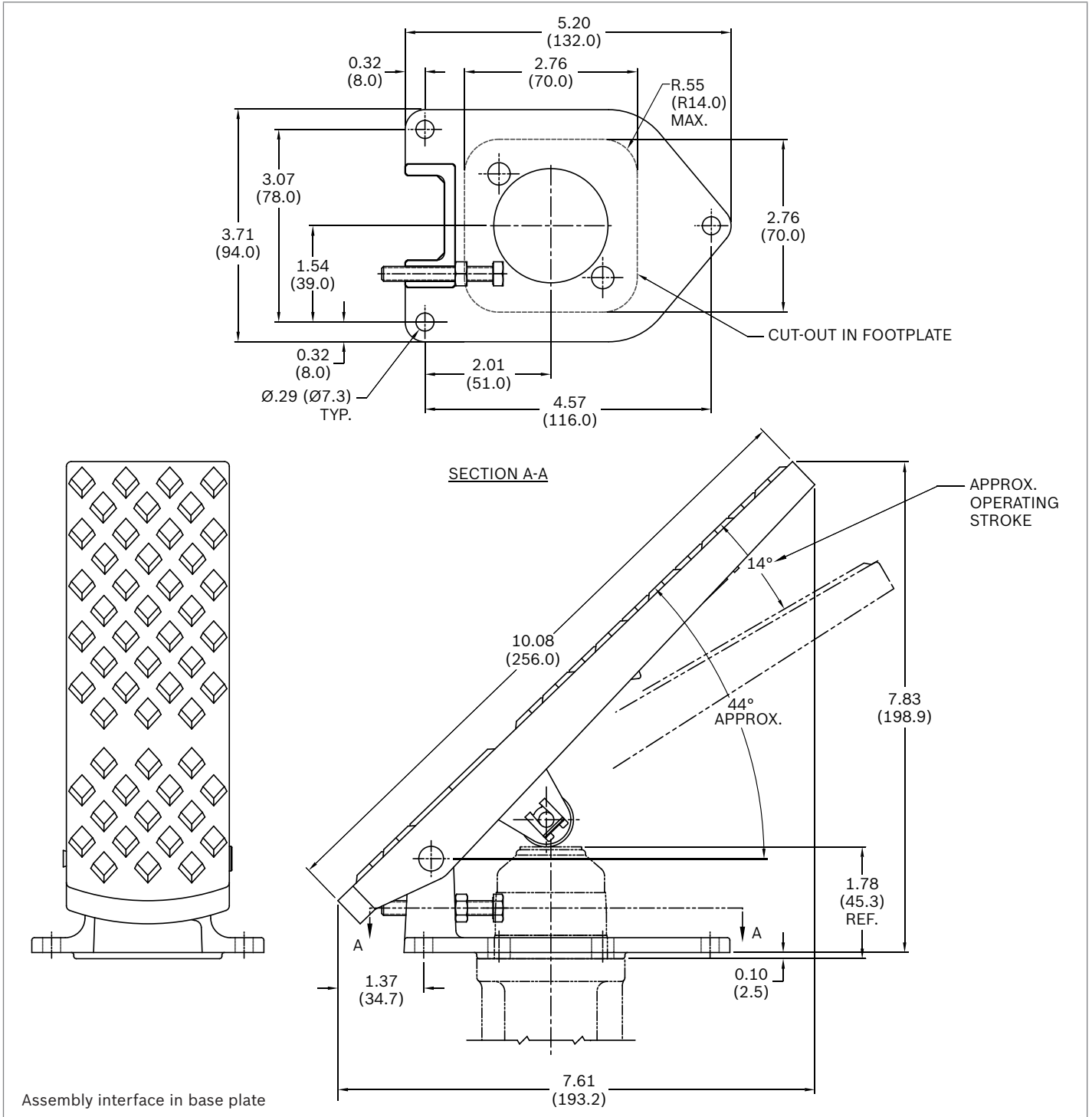
▼ Without pedal



Ports according to ISO 11926-1

Port	Dimensions	
ACS, PLT	7/16 - 20 UNF	SAE-04
B, P, BLS, T	9/16 - 18 UNF	SAE-06

▼ With treadle-style foot pedal for option code "FP"



QCC LLC
7301 W. Wilson Avenue,
Harwood Heights, IL 60706
708-887-5400
www.qccorp.com
www.qcc.parts

© 2021 QCC LLC

All rights reserved. Neither this document, nor any part of it, may be reproduced, duplicated, circulated or disseminated, whether by copy, electronic format or any other means, without the prior consent and authorization of QCC LLC.

The data and illustrations in this brochure/data sheet are intended only to describe or depict the products. No representation or warranty, either express or implied, relating to merchantability or fitness for intended use, is given or intended by virtue of the information contained in this brochure/data sheet. The information contained in this brochure/data sheet in no way relieves the user of its obligation to insure the proper use of the products for a specific use or application. All products contained in this brochure/data sheet are subject to normal wear and tear from usage. Subject to change.